

## WELCOME TO THE KENNEDY CENTER MILLENNIUM STAGE

**Free Performances Every Day at 6 p.m.**

As part of its effort to make the performing arts available to everyone, the Kennedy Center offers a free performance every day on the Millennium Stage in the Grand Foyer. These performances of music, theater, and dance feature emerging and established artists from the Washington area, across the nation, and around the world.

**Free tours of the Kennedy Center** are given daily by the Friends of the Kennedy Center volunteers Monday-Friday 10 a.m. to 5 p.m., with the last tour starting at approximately 4:45 p.m. On Saturday and Sunday, tours are offered from 10 a.m. to 1 p.m.

Use the **Kennedy Center Shuttle** to and from the METRO subway. **Free every day.** Ride METRO Blue or Orange Line to the Foggy Bottom/GWU Station, and take the Kennedy Center Shuttle—departing every 15 minutes every day 8 a.m. to midnight.



The Kennedy Center welcomes persons with disabilities. For information on services, call the Office of Accessibility at (202) 416-8727 or TTY (202) 416-8728.

**For information on all Kennedy Center performances, call (202) 467-4600 or toll free (800) 444-1324.**  
[kennedy-center.org](http://kennedy-center.org)



**Get Connected!**  
Become a fan of Millennium Stage on Facebook and check out artist photos, upcoming events, and more!

The Millennium Stage was created and underwritten by James A. Johnson and Maxine Isaacs to make the performing arts accessible to everyone in fulfillment of the Kennedy Center's mission to its community and the nation.

The Millennium Stage, underwritten by James A. Johnson and Maxine Isaacs, is brought to the public by Target Stores, with additional funding provided by the U.S. Department of Education, The Meredith Foundation,

Dr. Deborah Rose and Dr. Jan A.J. Stolwijk,  
DC Commission on the Arts and Humanities,  
the Millennium Stage Endowment Fund, and the  
Kennedy Center Washington Committee on the Arts.

### Millennium Stage Endowment Fund Contributors

James A. Johnson and Maxine Isaacs  
Fannie Mac  
James V. Kimsey  
Gilbert and Jaylee Mead  
Mortgage Bankers Association of America  
Anonymous

and other gifts to secure the future of the Millennium Stage



THE KENNEDY CENTER

Millennium  
Stage

★ *Performing Arts for Everyone* ★

Live Internet Broadcast at [kennedy-center.org/millennium](http://kennedy-center.org/millennium)  
Every Day at 6 p.m. Eastern Time

Millennium Stage brought to you by



**The John F. Kennedy Center for the Performing Arts**

STEPHEN A. SCHWARZMAN, Chairman  
MICHAEL M. KAISER, President

Today's Best Students... Tomorrow's Brightest Stars  
**The Conservatory Project**  
A Project of the Kennedy Center Millennium Stage

**MAY 18-25, 2009**

---

**Dear Friends,**

Over the past six years, the exceptional young artists of the Conservatory Project have continued to demonstrate the remarkable vitality and virtuosity being cultivated by America's top music programs.

Please join me in thanking all of the participating institutions, without whom this series would not be possible. The collaborative spirit that has brought the Conservatory Project to life will serve growing numbers of artists and audiences as we continue to work in partnership.

At the end of this evening's performance, I'm sure you will feel that the future of classical, jazz, and world music is in good hands.

Sincerely,



**Michael M. Kaiser**  
President

**The Juilliard School**  
NEW YORK, NEW YORK

**Oberlin Conservatory of Music at Oberlin College**  
OBERLIN, OHIO

**Northwestern University Bienen School of Music**  
EVANSTON, ILLINOIS

**Berklee College of Music**  
BOSTON, MASSACHUSETTS

**Eastman School of Music of the University of Rochester**  
ROCHESTER, NEW YORK

**The Shepherd School of Music at Rice University**  
HOUSTON, TEXAS

**San Francisco Conservatory of Music**  
SAN FRANCISCO, CALIFORNIA

**Yale School of Music**  
NEW HAVEN, CONNECTICUT

**Derek McWilliams**, from Peterborough, England, began playing the piano at age six and picked up guitar and bass in his early teens. After working a day job in the UK for a few years, he moved to Boston to study at Berklee. While he spends much of his time in the college's state-of-the-art recording studios as a music production and engineering major, the multi-instrumentalist also gigs with five different bands around the Boston area as a bassist, pianist, and vocalist. Recruited most often as bassist, McWilliams is widely sought for his varied abilities with a funky groove, a walking upright line, or a pop rock riff, all with an authentic feel, and all in service of the band's sound.

**Jake Cohen**, born in Philadelphia, has been playing drums since age four, absorbing all styles of music, ranging from rock, to old school soul, to fusion, and everything in between. In 2007 he moved to Boston to study performance at Berklee, and has since become one of the most sought-after drummers in the school. He currently studies with drumming icon Terri Lyne Carrington, and is constantly gigging and recording in the Boston area. Some of his favorite bands and musicians include: Steely Dan, Frank Zappa, John Mayer, Tower of Power, The Band, The Beatles, Wilco, Andrew Bird, Jeff Porcaro, Steve Jordan, Al Jackson Jr., Jim Gordon, Jim Keltner, and Brian Blade.

**Friday Evening, May 22, 2009 at 6:00 p.m.**

**★ Eastman School of Music  
of the University of Rochester**  
ROCHESTER, NEW YORK

**Arabesque Winds**

**Deidre Huckabay, flute**

**Liz Spector, oboe**

**Isabel Kim, clarinet**

**Eryn Bauer, bassoon**

**Sophia Goluses, horn**

**Eugène Bozza  
(1905-1991)**

Scherzo

**Samuel Barber  
(1910-1981)**

"Summer Music"

**Paul Hindemith  
(1895-1963)**

*Kleine Kammermusik*  
Lustig. Massig Schnelle Viertel  
Walzer. Durchweg Sehr Leise  
Ruhig Und Einfach. Achtel  
Schnelle Viertel  
Sehr Lebhaft

**György Ligeti  
(1923-2006)**

*Sechs Bagatellen*  
Allegro con spirito  
Rubato. Lamentoso  
Allegro grazioso  
Presto ruvido  
Adagio. Mesto  
Molto vivace. Capriccioso

## Eastman School Of Music

Eastman is proud to present the Arabesque Winds—five young women who have not only won many national and international awards for their musical artistry, but who also demonstrate the maturity and entrepreneurial skill required to succeed in a competitive musical world.

The Eastman School of Music is honored to take part in the 2009 Conservatory Project at the Kennedy Center, an inspiring, mutually enriching relationship.

Douglas Lowry  
Dean  
Eastman School of Music

**The Eastman School of Music** was founded in 1921 by industrialist and philanthropist George Eastman (1854-1932), founder of Eastman Kodak Company. It was the first professional school of the University of Rochester. Mr. Eastman's dream was that his school would provide a broad education in the liberal arts as well as superb musical training, and that it would be a major cultural force in Rochester. In fact, the Eastman Theater façade is engraved "For the enrichment of community life."

There have been six directors of the Eastman School: Alf Klingenberg (1921-23); Howard Hanson (1924-1964); Walter Hendl (1964-1972); Robert Freeman (1972-1996); James Undercofler (1997-2006); and Douglas Lowry (appointed in 2007).

About 900 students are enrolled in the Collegiate Division of the Eastman School of Music—about 500 undergraduate and 400 graduate students. Students come from almost every state, and approximately 20 percent are from other countries. Each year about 280 new students enroll, selected from more than 2,100 applicants. They are guided by more than 95 full-time faculty members. Seven Pulitzer Prize winners have taught at Eastman, as have several Grammy Award winners.

Over 90 percent of the more than 10,000 Eastman School alumni are prominent in various fields of the arts. Among them are opera singers Renée Fleming, Joyce Castle, Anthony Dean Griffey, and the late William Warfield; jazz musicians Ron Carter, Steve Gadd, and Maria Schneider; conductors John Fiore and the late Frederick Fennell; conductor, oboist and record producer Mitch Miller; composers Peter Mennin, Dominick Argento, Michael Torke, Charles Strouse, Alexander Courage, and Jeff Beal; Mark Volpe, managing director of the Boston Symphony Orchestra; Chicago Symphony Orchestra first-chair musicians Larry Combs (clarinet) and Chris Martin (trumpet); Raymond Gniewek, concertmaster of the Metropolitan Opera Orchestra for more than 30 years; Doriot Anthony Dwyer, former principal flute of the Boston Symphony and one of the first

women to be named a principal in a major American orchestra; and Nicole Cabell, winner of the 2005 BBC Cardiff Singer of the World Competition.

## Biographies



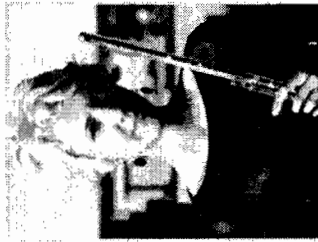
Recognized for their fresh, energetic, and interactive performances, the **Arabesque Winds** are the recent winners of the 2008 International Chamber Music Ensemble Competition. In what the judges described as "an astounding performance" at Carnegie Hall's Weill Recital Hall, the group was awarded with the Grand Prize out of over 70 international ensembles. In February of

2009, they won Second Prize at the Henri Tomasi International Woodwind Quintet Competition in Marseilles, France, where they also won the Lucien Guerinel Prize for best interpretation of the composer's commissioned work for the competition. In April 2009, they won the Coleman-Sanderson Prize for Woodwind and Brass in the 63rd annual Colman Chamber Ensemble Competition. The group has also won the Harvard Musical Association's 2009 Arthur W. Foote Prize, awarded to young musicians on the verge of professional careers.

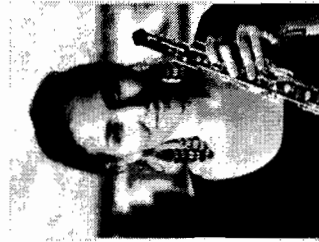
Dedicated to the performance of contemporary wind music, the Arabesque Winds acted as an ensemble-in-residence at the 2008 Festival Internacional Chihuahua in Chihuahua, Mexico. There, they performed the world premiere of Rodrigo Valdez Hermoso's "beyond the darkness, there's still the light." They have also performed the American premieres of Carlos Sanchez-Gutierrez's *Twittering Variations* and Juan Trigos's *Ritercare V*. In April of 2009, the Arabesque Winds were a featured ensemble in Eastman's Warren and Pat Benson Forum on Creativity. Ensemble members also frequently perform with Ossia, NEO Orchestra, and Eastman BroadBand.

As active supporters of music outreach, the Arabesque Winds have presented educational concerts throughout Rochester as participants in the Eastman School's noted Music for All program. In January of 2009, they collaborated with the Rochester City Ballet to present a children's program featuring Prokofiev's *Peter and the Wolf*. They have also served as ensemble-in-residence in the public schools of Lake Placid and Tupper Lake, New York, and have been invited to take part in similar educational projects this upcoming year at schools in Texas, Florida, New York, and New Jersey. This spring, the group will premiere a woodwind quintet concerto by Baljinder Sekhon II, alongside young Rochester area music students. They have also been selected to be fellows at the Atlantic Music Festival this summer as resident performers and teachers.

The Arabesque Winds formed at the Eastman School of Music in 2005. The group has been repeatedly selected to perform on the school's Honors Chamber Music Recital series. While at Eastman, the quintet has been coached by Robert DiLutis, Anne Harrow, and Kenneth Grant. They have also taken part in coaching and master classes with members of the Imani Winds, Zephyros Winds, and Windscape.



**Deidre Huckabay**, flute, is in her fourth year at the Eastman School of Music, in the studio of Bonita Boyd. As general manager of the student-run New Eastman Outreach Orchestra, she coordinates educational and interactive orchestral programs in venues throughout Rochester. In December 2007, she and a group of Eastman students performed two contemporary operas at the SpazioMusica Festival in Cagliari, Italy, alongside noted singers and actors from Mexico and Italy. As part of the Eastman BroadBand, Ms. Huckabay performed alongside the award-winning Garth Fagan Dance Company at the Joyce Theater in New York City, at Nazareth College in Rochester, and at the University of Rochester. She has also performed in Morelia, Mexico at the Conservatorio de las Rosas. She was recently selected to the University of Rochester's Take Five Scholars program, and will continue work on a comprehensive project to record the unique practices of her teacher, Bonita Boyd.



**Liz Spector**, oboe, is a senior at the Eastman School of Music in the studio of Richard Killmer. She has been the English horn and associate principal oboe of the Harrisburg Symphony Orchestra since Fall of 2006. She recently performed the U.S. premiere of Rolf Rudin's "Am Ende des Tages" for solo English horn and wind ensemble. Ms. Spector frequently performs with the Rochester Chamber Orchestra, the Mercury Opera, the Eastman Wind Ensemble and the Eastman Philharmonia. She has participated in summer festivals such as the Boston University Tanglewood Institute, the American Institute of Musical Studies in Graz, Austria, Music in the Mountains in Durango, Colorado, and the International Festival Institute at Roundtop, Texas. In summer 2008, she attended master classes at the Banff Center of the Arts as well as the orchestral program at the Lucerne Academy in Switzerland.

**Isabel Kim**, clarinet, is a senior at the Eastman School of Music in the studio of Jon Manasse. She has attended Juilliard Pre-College and the Manhattan School of Music Pre-College. She has performed with many ensembles including New York Youth Symphony, the Making Score Ensemble, New Jersey All State Orchestra, Eastman Wind Ensemble, Ossia, and NEO. Ms. Kim has also participated in summer festivals such as the Kinhaven Music School and the Eastern Music Festival. She has recorded with the Eastman Wind Ensemble and the Canadian Brass for their *Manhattan Music* album.



**Sophia Goluses** holds the position of co-principal horn with the Glens Falls Symphony Orchestra. Ms. Goluses has held the position of principal horn in the Ohio Light Opera and the Sieur DuLuth Summer Arts Festival Opera Orchestra. She has played with the Syracuse Symphony Orchestra, Rochester Philharmonic Orchestra, Mercury Opera Rochester, and the Rochester Oratorio Society. In November of 2008, she appeared as a soloist with the Eastman Composer's Sinfonietta, giving the world premiere of Jennifer Bellor's "Bell Song," for solo horn and orchestra. Ms. Goluses has attended music festivals such as Aspen Music Festival and School, Music Academy of the West, Pierre Montoux School for conductors and musicians, and the Brevard Music Festival. She has recorded with the Eastman Opera Theater for Troy Records, the Eastman Wind Ensemble and the Canadian Brass with Arkivmusic, and the Ohio Light Opera with Albany Records. In the spring of 2008, Ms. Goluses completed her Bachelor of Music from the Eastman School of Music in horn performance where she studied with W. Peter Kurau and Jennifer Burch. Ms. Goluses maintains a private teaching studio in Rochester, New York.



**Eryn Bauer**, bassoon, is currently a junior at the Eastman School of Music and studies with John Hunt. She plays in a wide variety of groups including chamber music, outreach performance, orchestras, and new music ensembles. She has played with the Rochester Philharmonic Orchestra, and soloed with the Tampa Bay Symphony at age 17. She traveled to Chihuahua, Mexico with the Eastman BroadBand to perform newly commissioned pieces. She recorded Michael Tenzer's *Resolution* which is to be released in summer 2009. She has participated in summer music festivals such as Sarasota Music Festival and Kinhaven Music School.



**Eryn Bauer**, bassoon, is currently a junior at the Eastman School of Music and studies with John Hunt. She plays in a wide variety of groups including chamber music, outreach performance, orchestras, and new music ensembles. She has played with the Rochester Philharmonic Orchestra, and soloed with the Tampa Bay Symphony at age 17. She traveled to Chihuahua, Mexico with the Eastman BroadBand to perform newly commissioned pieces. She recorded Michael Tenzer's *Resolution* which is to be released in summer 2009. She has participated in summer music festivals such as Sarasota Music Festival and Kinhaven Music School.

## Upcoming Concerts

# Arabesque Winds

*Eastman School of Music concerts will resume  
at the beginning of the Fall 2009 semester, in September 2009.*

Deidre Huckabay, flute  
Liz Spector, oboe  
Isabel Kim, clarinet  
Eryn Bauer, bassoon  
Sophia Goluses, horn

Information about upcoming Eastman concerts and events can be found at:  
[www.esm.rochester.edu/concerts/calendar.php](http://www.esm.rochester.edu/concerts/calendar.php)

**Kilbourn Hall fire exits** are located along the right and left sides, and at the back of the hall. **Eastman Theatre fire exits** are located throughout the Theatre along the right and left sides, and at the back of the orchestra, mezzanine, and balcony levels. In the event of an emergency, you will be notified by the stage manager. If notified, please move in a calm and orderly fashion to the nearest exit.

**Please note:** The use of photographic and recording equipment is not allowed in this building. Patrons may request programs in Braille in advance of a performance by contacting the Concert Office at (585) 274-1110. For information about Eastman concerts, visit our website at [www.esm.rochester.edu](http://www.esm.rochester.edu) or call our MusicLine at (585) 274-1100. We reserve the right to ask anyone disrupting a performance to leave the hall.

Friday, May 8, 2009  
8:00 p.m.  
Kilbourn Hall



**EASTMAN**  
SCHOOL OF MUSIC  
UNIVERSITY OF ROCHESTER

Thank you!

*PROGRAM*

**Scherzo**

Eugène Bozza  
(1905-1991)

**Summer Music**

Samuel Barber  
(1910-1981)

**Kleine Kammermusik**

Lustig. Mässig schnelle Viertel  
Walzer. Durchweg sehr leise  
Ruhig und einfach. Achtel  
Schnelle Viertel  
Sehr lebhaft

Paul Hindemith  
(1895-1963)

**Sechs Bagatellen**

Allegro con spirito  
Rubato. Lamentoso  
Allegro grazioso  
Presto ruvido  
Adagio. Mesto  
Molto vivace. Capriccioso

György Ligeti  
(1923-2006)

*Andrews ISD Education Foundation presents*

*An Evening of  
Chamber Music*

*Featuring*

**ARABESQUE**

**WINDS**

**Woodwind Quintet**



Saturday, April 18, 7:00 pm

AISD Performance Center Concert Hall

### What is the Andrews ISD Education Foundation?

The Andrews ISD Education Foundation is a nonprofit corporation (501)(C)(3) chartered in April, 2000 whose mission is to provide quality Educational opportunities in order that all students may become successful and productive citizens. The Foundation operates independently of the Andrews independent School District for the purpose of:

- facilitating student achievement and skill development,
- recognizing and promoting staff excellence,
- encouraging involvement from individuals, businesses and civic organizations in the community.

### Why was the Foundation established?

The vision of the founders of the Andrews ISD Educational Foundation was to develop an organization with great possibilities for enhancing and enriching the educational experiences of both students and faculty of Andrews ISD. In order to realize this vision, the founders created a permanent endowment by collecting tax-deductible gifts. The interest from the endowment will be used to provide solid monetary support for educational programs and opportunities beyond the budget of Andrews ISD.

### What are the goals of the Foundations?

- Encourage all students to work toward reaching their highest potential.
- Attract, support and recognize teachers for innovative efforts and exemplary teaching.
- Build public awareness and confidence in Andrews schools.
- Involve the community in assuring a quality education for the leaders and works of tomorrow.

### How can I help?

- **By Supporting:** Your support may come from contributions of cash, annual pledges, memorial gifts, real estate, stocks, planned giving, or other gifts in-kind.
- **By Participating:** The Foundation welcomes the intangible and invaluable gifts of your time and service.

Your contribution to the Andrews Education Foundation will be gratefully received and carefully appropriated to provide education opportunities for the students of Andrews ISD. Thank you!

#### Officers

**Peter C. Francis - President**  
**Glen Hackler - Vice President**  
**David Mitchell - Secretary**  
**Robin Harper - Treasurer**

#### Directors

Pam Brownlee	Charlotte Huckabay	Dan Snow
Cassandra Cheek	Tom Jones	Peggy Stavinoha
Lloyd Eisenrich	Jerry Lynch	Ann Stokes
Brian Gordon	Charlie Mohr	Jerry Tochterman
Michael Greenough	Russell Shannon	Lynne Wilson

### A Few Words of Thanks

There are many people who had a part in making the Arabesque Winds' trip to Andrews and this evening possible.

- ♫ To Superintendents David Mitchell and Bobby Azam and the AISD Education Foundation board, who saw the worthiness of the project and gave their enthusiastic approval.
- ♫ To our generous donors, who made it possible financially.
- ♫ To principals Avena, Marquez, Vasquez, Bane and Howell, who supported their students' participation.
- ♫ To band directors Kevin Leonard, Mark Kaufman and Claire Sanders; choir directors Michael Matlock, Jody Keese and Gary Ragland; and music teachers Celeste Berta, Joni Reese, and Robbie Bass who endeavor to convey the power and joy of music to our children every day.
- ♫ To the Andrews County News, KACT, AISD-TV for publicity.
- ♫ To Melissa Welborn, Terry James, Donetta Patterson and Katie Pendleton for assistance well beyond their job descriptions.
- ♫ To Robin Harper and Lynn Wilson for organizing the reception.

*Gratefully,*  
*Charlotte Huckabay, Concert Chairman*



# Andrews Builders Supply

**Jerry M Lynch**  
**Owner**

**316 E Broadway**  
**Andrews, TX 79714**  
**432-523-2965**

## CONCERT PROGRAM

**EUGÈNE BOZZA (1905-1991)**

Scherzo

**SAMUEL BARBER (1910-1981)**

Summer Music

**PAUL HINDEMITH (1895-1963)**

Kleine Kammermusik

Lustig, Massig Schnelle Viertel  
Walzer, Durchweg Sehr Leise  
Ruhig Und Einfach, Achtel  
Schnelle Viertel  
Sehr Lebhaft

## **ca Intermision**

**AUGUST KLUGHARDT (1847-1902)**

Wind Quintet in C major, Op. 79

Allegro non troppo  
Allegro vivace  
Andante grazioso  
Adagio – Allegro molto vivace

**GYÖRGY LIGETI (1923-2006)**

Sechs Bagatellen

Allegro con spirito  
Rubato, Lamentoso  
Allegro grazioso  
Presto ruvido  
Adagio, Mesto  
Molto vivace, Capriccioso

*Please join us for a reception following the concert.*

 PLEASE JOIN US IN  
THANKING OUR DONORS 

---

### GOLD CIRCLE ~ \$1,000 or more

Andrews Builders Supply  
LES

National Bank of Andrews  
Waste Control Specialists LLC  
Weatherby-Eisenrich Insurance

### SILVER CIRCLE \$500 TO \$999

Casabella  
Palmer of Texas  
John R. Parish Co.  
Southwest Realty

### BRONZE CIRCLE \$100 TO \$499

Commercial State Bank  
Brian & Sue Gordon  
Perdue Brandon Fielder Collins & Mott, LLP  
Permian Regional Medical Center  
Peter C. Francis / Germania Insurance  
Jan & James Varner

**COMMERCIAL STATE BANK**  
**200 South Main**  
**523-3440**

## Upcoming Concerts

Monday, April 13  
Musica Nova  
Kilbourn Hall 8 PM

Thursday, April 16  
Contemporary Percussion Ensemble  
Kilbourn Hall 8 PM

Friday, April 17  
Eastman Jazz Ensemble and New Jazz Ensemble  
Kilbourn Hall 8 PM

Sunday, April 26  
Chamber Music Honors Recital  
Kilbourn Hall 7 PM

Monday, April 27  
World Music Series:  
Gamelan Lila Muni  
Kilbourn Hall 8 PM

Tickets: \$18, \$12, \$8 (Discounts for UR/ID holders)

Information about upcoming Eastman concerts and events can be found at:  
[www.esm.rochester.edu/concerts/calendar.php](http://www.esm.rochester.edu/concerts/calendar.php)

**Please note:** The use of photographic and recording equipment is not allowed in this building. Patrons may request programs in Braille in advance of a performance by contacting the Concert Office at (585) 274-1110. For information about Eastman concerts, visit our website at [www.esm.rochester.edu](http://www.esm.rochester.edu) or call our MusicLine at (585) 274-1100. We reserve the right to ask anyone disrupting a performance to leave the hall.

**Supporting the Eastman School of Music:**  
We at the Eastman School of Music are grateful for the generous contributions made by friends, parents, and alumni, as well as local and national foundations and corporations. Gifts and grants to the School support student scholarships, performance and academic facilities, educational initiatives, and programs open to the greater Rochester community. Every gift, no matter the size, is vital to enhancing Eastman's commitment to excellence. For information on making a gift, please contact the Development Office at (585) 274-1040, or visit the Development website at [www.esm.rochester.edu/giving](http://www.esm.rochester.edu/giving).

Thank you!

# The Warren and Patricia Benson Forum on Creativity

with guest artists

Lia Purpura, poet

Tony Arnold, soprano

Howard Hanson Visiting Professor

Monday, April 6, 2009

8:00 p.m.

Ciminelli Formal Lounge



**EASTMAN**  
SCHOOL OF MUSIC

UNIVERSITY OF ROCHESTER

Elizabeth Kelley

**Icicles**

*Based on: Parking Lot in Snow, Conundrum*

**PROGRAM**

Jamie Jordan, soprano  
Deidre Huckabay, flute  
Isabel Kim, clarinet  
Jung Sun Kang, piano

**Red Leaf**

Chad Latta

Hope Carlson, soprano  
Eun Mi Ko, piano  
Chad Latta, prepared piano

**Detachment**

John Liberatore

*Based on: Plaques*

**Three Songs for Autumn**

Fall  
Red Leaf  
Smoke

Scott Perkins

Abi Lewis, mezzo-soprano  
Deidre Huckabay, flute  
Isabel Kim, clarinet  
Hae Yeun Jeun, piano

Daniel Pickens-Jones, baritone  
Hae Yeun Jeun, piano

**Purpura Songs**

Andrew McMannus

Universal Principles  
Conundrum  
Aftermath

**Once**

Tonia Ko

Stephania Romaniuk, soprano  
Jung Sun Kang, piano

Stephan Holden-Corbett, baritone  
Deidre Huckabay, flute  
Isabel Kim, clarinet  
Eun Mi Ko, piano

**Back Lot**

Steve Danyew

Ashley Stone, soprano  
Ashley Garofalo, piano

*INTERMISSION*

**Undivided Selves**

*Based on: Universal Principles, Border Report  
Also S. Beckett, Mirlitonmades*

Jamie Jordan, soprano  
Luke Fitzpatrick, flute  
Rebecca Graham, clarinet  
Michael Kaufman, cello  
Jung Sun Kang, piano

Lena Nietfield

Daniel Pickens Jones, baritone  
Liz Spector, oboe d'amore  
Rohan Krishnamurthy, dholak  
Chad Latta, harmonium

*Qawwali Chorus:*

Andrew Allen, Scott Perkins, John Liberatore, Steven Rice

**Three Settings of Purpura**

Conundrum  
Universal Principles  
Red Leaf

Ashley Stone, mezzo-soprano  
Jung Sun Kang, piano

*Arabesque Winds*  
Deidre Huckabay, flute  
Liz Spector, oboe  
Isabel Kim, clarinet  
Ben Opp, bassoon  
Sophia Goluses, horn

Geoffrey Pope, conductor

**Border Report**

**Taint Sysia**

*Based on: Once*

Abi Levis, mezzo-soprano  
Brian Heveron-Smith, stone chimes

Andrew Allen

**Two Poems of Lia Purpura**

Design  
Smoke

Leigh Michelow, soprano  
Hae Yeun Jeun, piano

Feng-Hsu Lee

**A Few Wintery Moments**

Scene 1: Smoke  
Scene 2: Sunday Morning  
Scene 3: Parking Lot in Snow

Jennifer Bellor

Ashley Bicklee, soprano  
Erin Ellis, violoncello  
Arun Nadgir, piano

WE WOULD LIKE TO WELCOME YOU TO OUR CIRCLE OF FRIENDS AND PATRONS

The phenomenal array of musical activity that the Chamber Music Foundation of New England offers would not be possible without the support of our Friends and Patrons. Income from ticket sales provides only a portion of the sum needed each year. By contributing to our Annual Campaign, our Friends and Patrons play an important role in helping us to present the finest in chamber music repertoire to our audiences, and the ability to introduce chamber music to hundreds of young people each year in addition to bringing this wonderful performance to new listeners through festivals and concerts. We depend on financial support from individuals, corporations and foundations to make up the balance needed to continue to enrich lives through great music.

I WILL SUPPORT CMFONE WITH THE FOLLOWING CONTRIBUTION

Name \_\_\_\_\_  
 Address \_\_\_\_\_  
 City \_\_\_\_\_  
 State/Zip \_\_\_\_\_  
 Phone \_\_\_\_\_  
 Email \_\_\_\_\_

Please acknowledge my gift in CMFONE listing as (choose one):

- Guardian \$10,000 - \$24,999       Sponsor \$500 - \$999
- Benefactor \$5,000 - 9,999       Supporter \$250 - \$499
- Patron \$2,500 - \$4,999       Affiliate \$100 - \$249
- Guarantor \$1,000 - \$2,499       Friend \$50 - \$99

I would like my contribution to be anonymous

My gift is in Memory of \_\_\_\_\_

My gift is in Honor of \_\_\_\_\_

Enclosed is my check payable to: CMFONE

Please charge my credit card:

- Visa       Master Card       American Express

Cardholder name \_\_\_\_\_

Address \_\_\_\_\_

Account # \_\_\_\_\_

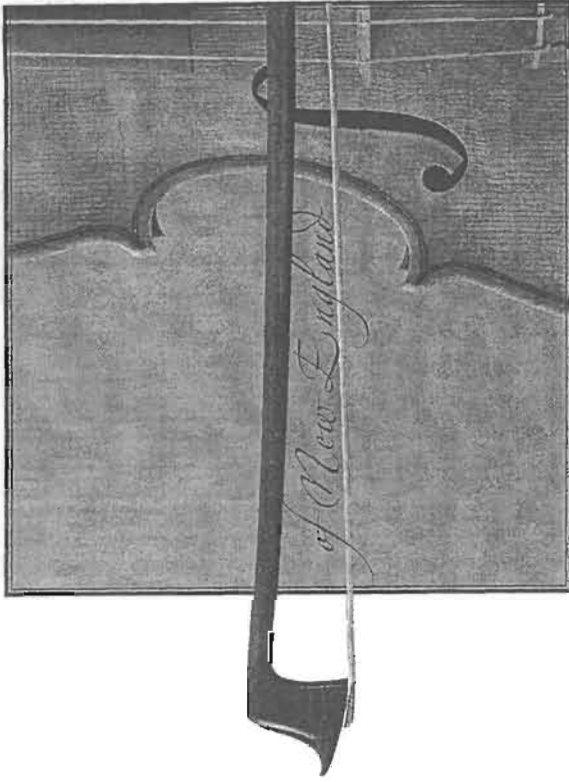
Exp. Date \_\_\_\_\_

Signature \_\_\_\_\_

I choose not to receive donor benefits, let my entire contribution to be tax-deductible  
 Please mail your contribution to:

Chamber Music Foundation of NE  
 P.O. Box 35085  
 Boston, MA 02135

CHAMBER MUSIC FOUNDATION



PRESENTS

CHAMBER MUSIC CONCERT  
 AT FIRST CHURCH IN BOSTON

First Church in Boston, 66 Marlborough Street Boston, MA 02116  
 March 15, 2009, 6:30 p.m.

## MEET THE ARABESQUE WINDS

The Arabesque Winds formed at the Eastman School of Music in 2005. The group has been repeatedly selected to perform on the school's Honors Chamber Music Recital series. While at Eastman, the quintet has been coached by Robert Dilutis, Anne Harrow, and Kenneth Grant. They have also been coached by members of the Imani Winds and Windscape.



Recognized for their fresh, energetic, and interactive performances, the Arabesque Winds are the recent winners of the 2008 International Chamber Music Ensemble Competition. In what the judges described as "an astounding performance" at Carnegie Hall's Weill Recital Hall, the group was awarded with the Grand Prize out of over 70 international ensembles. In addition, the group has won the Harvard Musical Association's 2009 Arthur W. Foote Prize, awarded to young musicians on the verge of professional careers.

Dedicated to the performance of contemporary wind music, the Arabesque Winds acted as an ensemble-in-residence at the 2008 Festival Internacional Chihuahua in Chihuahua, Mexico. There, they performed the world premiere of Rodrigo Valdez Hermoso's "beyond the darkness, there's still the light," a work commissioned by the festival on the group's behalf. In 2007, the group performed the American premieres of Carlos Sanchez-Gutierrez's "Twittering Variations," and Juan Trigos's "Ricerca V." In April 2009, the Arabesque Winds will act as a featured ensemble at Eastman's Warren and Pat Benson Forum on Creativity, and will premiere a series of works by Eastman composers inspired by poetry.

Ensemble members also frequently perform with Ossia, Eastman's student-run contemporary music ensemble, as well as the New Eastman Outreach Orchestra, NEO. As active supporters of music education and outreach, the Arabesque Winds have presented educational and interactive programs to various audiences at schools, churches, and libraries throughout the Rochester area. The group has enthusiastically participated in the Eastman School's noted "Music For All" program, and has served as ensemble in residence in the public schools of Lake Placid, NY. The group has been invited to take part in similar educational projects this upcoming year at schools in Texas, Florida, New York, and New Jersey.

### SPRING 2009 CMFONE CONCERT SCHEDULE

May 10, 2009

Concert No. 4

Franz Schubert      Sonata for Cello and Piano in A Minor, D. 821 "Arpeggione"  
 George Gershwin      Preludes (Cello and Piano)  
 Antonin Dvořák      Piano Quintet in A major op.81

## CONCERT PROGRAM

EUGÈNE BOZZA (1905-1991)  
 Scherzo

SAMUEL BARBER (1910-1981)  
 Summer Music

PAUL HINDEMITH (1895-1963)  
 Kleine Kammermusik

Lustig. Massig Schnelle Viertel  
 Walzer. Durchweg Sehr Leise  
 Ruhig Und Einfach. Achtel  
 Schnelle Viertel  
 Sehr Lebhaft

## I N T E R M I S S I O N

AUGUST KLUGHARDT (1847-1902)

Wind Quintet in C major, Op. 79  
 Allegro non troppo  
 Allegro vivace  
 Andante grazioso  
 Adagio - Allegro molto vivace

GYÖRGY LIGETI (1923-2006)

Sechs Bagatellen  
 Allegro con spirito  
 Rubato. Lamentoso  
 Allegro grazioso  
 Presto ruvido  
 Adagio. Mesto  
 Molto vivace. Capriccioso

**FloriMezzo Season Seven**

**\*Thank you 2008/09 Sponsors!**

***Platinum Performance***

Bill and Hazel Hough

***Golden Concerto***

David Humphrey

***Silver Sonata***

Alfred T. May

***Chamber Players Circle***

COL and Mrs. Bogdan Gieniewski

***Ensemble Player***

Gayle Bertelstein

Carol & Tony Skey

***FloriMezzo Board of Directors***

Jessica Calandra, David Humphrey William Goodwin,

John Gonzalez, Lori Kleinman, and Ruth Klukoff

**Funded in part by the Pinellas County Commission  
through the Cultural Development Grants**

***FloriMezzo presents***

**“Spring Fresh Artists”**

Saturday, March 14<sup>th</sup>, 2pm

Palladium Theater

Vivaldi’s set of Concertos, “*Four Seasons*” are based on four sonnets thought to be written by Vivaldi himself.

*Vivaldi’s Sonnet for Spring*

**Allegro**

Springtime is upon us.

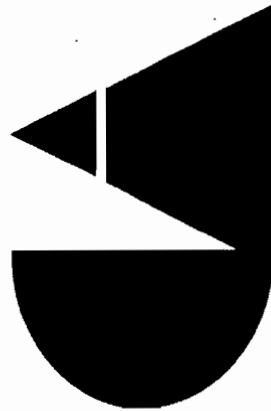
The birds celebrate her return with festive song, and murmuring streams are softly caressed by the breezes. Thunderstorms, those heralds of Spring, roar, casting their dark mantle over heaven, Then they die away to silence, and the birds take up their charming songs once more.

**Largo**

On the flower-strewn meadow, with leafy branches rustling overhead, the goat-herd sleeps, his faithful dog beside him.

**Allegro**

Led by the festive sound of rustic bagpipes, nymphs and shepherds lightly dance beneath the brilliant canopy of spring.



**cultural affairs**  
PINELLAS COUNTY

-Program-

**The Four Seasons**

*La primavera, "Spring"*

Allegro - Largo - Allegro

Antonio Vivaldi

**Sean O'Neil, Soloist, Violin:** Christopher Takeda, Faith Bouie,  
Lena Cambis, Charity Bouie, Stephanie Fournier, and David Humphrey  
**Viola:** Michael McClelland and Nathan Frantz

**Cello:** Abraham Feder and Christopher Schnell **Bass:** James Petrecca

**Fragments**

*Sextet for Winds and Strings*

**Andre Dubas, Conductor**

Lane Lederer, Oboe, Jessica Calandra, Clarinet  
Andrew Karr, Horn, Robert Smith, Trumpet  
Laura Smith, Cello, James Petrecca, Bass

Nick White

**Hunter's Chorus**

**Humoresque**

**Vivace Strings**

**Violin:** Tora Alexander, Molly Crosby, Daniel Denison,  
Amanda Green, Maddy Klee, Mallory Lundquist,  
Ana Gabriela Rocha, Zoe Turtle, and Ruth Klukoff, **Director**

C.M. von Weber

Antonin Dvorak

**Sechs Bagetellen**

**Arabesque Winds**

Deidre Huckabay, Flute  
Liz Spector, Oboe  
Isabel Kim, Clarinet  
Eryn Bauer, Bassoon  
Sophie Goluses, Horn

György Sándor Ligeti

-Intermission-

**Air from Suite in D**

Bach/Stokowski

**Violin:** Sean O'Neil, Christopher Takeda, Faith Bouie,  
Lena Cambis, Charity Bouie, Stephanie Fournier, and David Humphrey  
**Viola:** Michael McClelland and Nathan Frantz

**Cello:** Abraham Feder and Christopher Schnell **Bass:** James Petrecca

**Scherzo, Op.48**

Eugène Joseph Bozza

**Arabesque Winds**

Deidre Huckabay, Flute  
Liz Spector, Oboe  
Isabel Kim, Clarinet  
Eryn Bauer, Bassoon  
Sophie Goluses, Horn

Carmina Burana

*Five Pieces for Ten Winds*

**Dr. William Wiedrich, Conductor**

Deidre Huckabay and JohnGonzalez, Flute  
Liz Spector and Katrina Crosby, Oboe  
Isabel Kim and Jessica Calandra, Clarinet  
Eryn Bauer and Maurizio Venturini, Bassoon  
Sophie Goluses and Max Bygrave, Horn

Carl Orff

**Violin Concerto No. 2**

Allegro con fuoco – Allegro moderato (*à la Zingara*)

Henryk Wieniawski

Levi Mitze, Violin

Beth Waligorski, Piano

***"Spring Fresh Artists"***

***Embracing the philosophy of FloriMezzo, top bay area professional musicians come together to coach and prepare music for performance with outstanding students, teachers, and community musicians.***

**Featured Guest Artists:** Arabesque Winds recognized for their fresh, energetic, and interactive performances, the Arabesque Winds are the recent winners of the 2008 International Chamber Music Ensemble Competition. In what the judges described as "an astounding performance" at Carnegie Hall's Weill Recital Hall, the group was awarded with the Grand Prize out of over 70 international ensembles. In February of 2009, they won 2nd Prize at the Henri Tomasi International Woodwind Quintet Competition in Marseilles, France, where they also won the Lucien Guerinel Prize for best interpretation of the composer's commissioned work for the competition. The group has also won the Harvard Musical Association's 2009 Arthur W. Foote Prize, awarded to young musicians on the verge of professional careers. This May, they will represent the Eastman School of Music at the Kennedy Center's Conservatory Project. Dedicated to the performance of 20 contemporary wind music, the Arabesque Winds acted as an ensemble-in-residence at the 2008 Festival Internacional Chihuahua in Chihuahua, Mexico. There, they performed the world premiere of Rodrigo Valdez Hermoso's "beyond the darkness, there's still the light." They have also performed the American premieres of Carlos Sanchez-Gutierrez's "Twittering Variations" and Juan Trigos's "Ricercare V." In April of 2009, the Arabesque Winds will act as a featured ensemble at Eastman's Warren and Pat Benson Forum on Creativity. Ensemble members also frequently perform with Ossia, NEO Orchestra, and Eastman BroadBand. As active supporters of music outreach, the Arabesque Winds have presented educational concerts throughout Rochester as participants in the Eastman School's noted "Music For All" program. In January of 2009, they collaborated with the Rochester City Ballet to present a children's program featuring Prokofiev's "Peter and the Wolf." They have also served as ensemble-in-residence in the public schools of Lake Placid and Tupper Lake, NY, and have been invited to take part in similar educational projects this upcoming year at schools in Texas, Florida, New York, and New Jersey. This spring, the group will premiere a woodwind quintet concerto by Baljinder Sekhon II, alongside young Rochester area music students. They have also been selected to be fellows at the Atlantic Music Festival this summer as resident performers and teachers. The Arabesque Winds formed at the Eastman School of Music in 2005. The group has been repeatedly selected to perform on the school's Honors Chamber Music Recital series. While at Eastman, the quintet has been coached by Robert DiLutis, Anne Harrow, and Kenneth Grant. They have also taken part in coachings and masterclasses with members of the Imani Winds, Zephyros Winds, and Windscape.

**Arabesque Winds:** **Deidre Huckabay, flute**, is in her fourth year at the Eastman School of Music, in the studio of Bonita Boyd. As general manager of the student-run New Eastman Outreach Orchestra, she coordinates educational and interactive orchestral programs in venues throughout Rochester. In December 2007, she and a group of Eastman students performed two contemporary operas at the SpazioMusica Festival in Cagliari, Italy, alongside noted singers and actors from Mexico and Italy. As part of the Eastman BroadBand, Deidre performed alongside the award-winning Garth Fagan Dance Company at the Joyce Theater in New York City, at Nazareth College in Rochester, and at the University of Rochester. She has performed in Morelia, Mexico at the Conservatorio de las Rosas. She was recently selected to the University of Rochester's Take Five Scholars program, and will continue work on a comprehensive project to record the unique practices of her teacher, Bonita Boyd. **Liz Spector, oboe**, is a senior at the Eastman School of Music in the studio of Richard Killmer. She has been the English horn and associate principal oboe of the Harrisburg Symphony Orchestra since Fall of 2006. She has recently performed the United States premiere Rolf Rudin's "Am Ende des Tages" for solo English horn and Wind Ensemble. Liz frequently performs with the Rochester Chamber Orchestra, the Mercury Opera, the Eastman Wind Ensemble and the Eastman Philharmonia. Liz has participated in summer festivals such as the Boston University Tanglewood Institute, the American Institute of Musical Studies in Graz, Austria, Music in the Mountains in Durango, Colorado, and the International Festival Institute at Roundtop, Texas. In summer 2008, she attended master classes at the Banff Center of the Arts as well as the orchestral program at the Lucerne Academy in Switzerland. **Isabel Kim, clarinet**, is a senior at the Eastman School of Music in the studio of Jon Manasse. She has attended Juilliard Pre-College and the Manhattan School of Music Pre-College. She has performed with many ensembles including New York Youth Symphony, the Making Score Ensemble, New Jersey All State Orchestra, Eastman Wind Ensemble, Ossia, and NEO. Isabel has also participated in summer festivals such as the Kinhaven Music School and the Eastern Music Festival. She has recorded with the Eastman Wind Ensemble and the Canadian Brass for their "Manhattan Music" album. **Eryn Bauer, bassoon** is currently a junior at the Eastman School of Music and studies with John Hunt. She plays in a wide variety of groups including chamber music, outreach performance, orchestras, and new music ensembles. She has played with the Rochester Philharmonic Orchestra, and soloed with the Tampa Bay Symphony at age 17. She traveled to Chihuahua, Mexico with the Eastman Broad Band to perform newly commissioned pieces. Eryn recorded Michael Tenzer's Resolution which is to be released in summer 2009. She has participated in summer music festivals such as Sarasota Music Festival and Kinhaven Music School. **Sophia Goluses, horn** holds the position of co-principal horn with the Glens Falls Symphony Orchestra. Ms. Goluses has held the position of principal horn in the Ohio Light Opera and the Sieur DuLuth Summer Arts Festival Opera Orchestra. She has played with the Syracuse Symphony Orchestra, Rochester Philharmonic Orchestra, Mercury Opera Rochester, and the Rochester Oratorio Society. In November of 2008, she appeared as a soloist with the Eastman Composer's Sinfonietta, giving the world premier of Jennifer Bellor's "Bell Song," for solo horn and orchestra. Ms. Goluses has attended music festivals such as Aspen Music festival and School, Music Academy of the West, Pierre Monteux School for conductors and musicians, and the Brevard Music Festival. She has recorded with the Eastman Opera Theater for Troy Records, the Eastman Wind Ensemble and the Canadian Brass with Archivmusik, and the Ohio Light Opera with Albany Records. In the spring of 2008, Ms. Goluses completed her B.M. from the Eastman School of Music in horn performance where she studied with W. Peter Kurau and Jennifer Burch. Ms. Goluses maintains a private teaching studio in Rochester, NY.

# ZÉPHYROS WINDS MASTER CLASS

January 29, 7:30-9:30 p.m.

Ciminelli Lounge

## PROGRAM

**Roaring Fork Quintet**

**Eric Ewazen  
(b. 1954)**

Kate Lemmon, flute  
Matt Lengas, oboe  
Richard Li, clarinet  
Erin Robertson, bassoon  
Jonathan Dozois, horn

**Quintet**

**Carl Nielsen  
(1865-1931)**

Nick Fitton, flute  
Emily Knaapen, oboe  
Luci Disano, clarinet  
David Weinberg, bassoon  
Tim Martin, horn

**Summer Music, op. 31**

**Samuel Barber  
(1910-1981)**

Deidre Huckabay, flute  
Liz Spector, oboe  
Isabel Kim, clarinet  
Eryn Bauer, bassoon  
Sophie Goluses, horn.

## Upcoming Concerts

Monday, December 15  
Repertory Singers and Women's Chorus  
Kilbourn Hall 8 PM

# Chamber Music Honors Recital

*Eastman School of Music concerts will resume  
at the beginning of the Spring 2009 semester,  
on Monday, January 12.*

Information about upcoming Eastman concerts and events can be found at:  
[www.esm.rochester.edu/concerts/calendar.php](http://www.esm.rochester.edu/concerts/calendar.php)

**Kilbourn Hall fire exits** are located along the right and left sides, and at the back of the hall. **Eastman Theatre fire exits** are located throughout the Theatre along the right and left sides, and at the back of the orchestra, mezzanine, and balcony levels. In the event of an emergency, you will be notified by the stage manager. If notified, please move in a calm and orderly fashion to the nearest exit.

**Please note:** The use of photographic and recording equipment is not allowed in this building. Patrons may request programs in Braille in advance of a performance by contacting the Concert Office at (585) 274-1110. For information about Eastman concerts, visit our website at [www.esm.rochester.edu](http://www.esm.rochester.edu) or call our MusicLine at (585) 274-1100. We reserve the right to ask anyone disrupting a performance to leave the hall.

A fully accessible restroom is located on the main floor of the Eastman School of Music. Our ushers will be happy to direct you to this facility.

**Supporting the Eastman School of Music:**  
We at the Eastman School of Music are grateful for the generous contributions made by friends, parents, and alumni, as well as local and national foundations and corporations. Gifts and grants to the School support student scholarships, performance and academic facilities, educational initiatives, and programs open to the greater Rochester community. Every gift, no matter the size, is vital to enhancing Eastman's commitment to excellence. For information on making a gift, please contact the Development Office at (585) 274-1040, or visit the Development website at [www.esm.rochester.edu/giving](http://www.esm.rochester.edu/giving).

Thank you!

Sunday, December 14, 2008  
9:00 p.m.  
Kilbourn Hall



**EASTMAN**  
SCHOOL OF MUSIC  
UNIVERSITY OF ROCHESTER

*PROGRAM*

**Trio for Oboe, Bassoon and Piano**

Allegro moderato  
Risoluto  
Andante  
Finale

Michael McGowan, oboe  
Clay Zeller-Townson, bassoon  
Jeffrey LaDeur, piano

Jean Françaix  
(1912-1997)

**Piano Trio in B Major, Op. 8**

Allegro con brio  
Scherzo  
Adagio  
Allegro

Nadya Meykson, violin  
Grace An, cello  
Min Young Kang, piano

Johannes Brahms  
(1833-1897)

**Cinq Danses Profanes et Sacrées**

Danse Agreste: Allegretto  
Danse Profane: Scherzando  
Danse Sacrée: Lent hiératique  
Danse Nuptial: Scherzando  
Danse Guerrière: Sauvagement frénétique

Henri Tomasi  
(1901-1971)

Deidre Huckabay, flute  
Elizabeth Spector, oboe  
Isabel Kim, clarinet  
Eryn Bauer, bassoon  
Sophie Goluses, horn

**Concertino for Two Pianos**

Hyoung Jin Kim, piano  
SeoHee Kang, piano

Dmitri Shostakovich  
(1906-1975)

Arabesque Winds  
Festival Internacional Chihuahua  
Preview Concert

Saturday September 20, 2008  
Howard Hanson Hall  
Eastman School of Music

Cinq Danses Profanes et Sacrées  
Danse Agreste: Allegretto  
Danse Profane: Scherzando  
Danse Sacrée: Lent  
Danse Nuptiale: Scherzando  
Danse Guerrière: Sauvagement frénétique

Henri Tomasi

Eight Etudes  
Maestoso  
Quietly  
Adagio possibile  
Vivace  
Andante  
Allegretto leggero  
Intensely  
Presto

Elliott Carter

— *Intermission* —

beyond the darkness there's still the light

Rodrigo Valdes-Hermoso

— *preview world-premiere* —

Twittering Variations

Carlos Sánchez-Gutierrez

Eastman

# BroadBand

**Carter** Eight Etudes and a Fantasy

**Ligeti** Kammerkonzert

**Trigos** Ricercare de Camera VI

**John-Muldoon** Páramo

**Sanchez-Gutierrez** EX

**Dieter Hennings** guitar

**Cristina Valdes** piano

**Makoto Nakura** marimba

**Arabesque Winds**

**Juan Trigos** conductor

September 18

8 PM

Kilbourn Hall

Free Admission

## Upcoming Concerts

Friday, September 19  
World Music Series and Music and Globalization  
Symposium Opening Concert  
Kilbourn Hall 8 PM  
Tickets: \$8-\$18

Saturday, September 20  
Music and Globalization Symposium Concert  
Kilbourn Hall 8 PM

Tuesday, September 23  
Faculty Artist Series:  
Eastman Jazz Faculty  
Kilbourn Hall 8 PM  
Tickets: \$10 (Free to UR/ID holders)

Wednesday, September 24  
Eastman Jazz Showcase  
Kilbourn Hall 8 PM

Information about upcoming Eastman concerts and events can be found at:  
[www.esm.rochester.edu/concerts/calendar.php](http://www.esm.rochester.edu/concerts/calendar.php)

**Kilbourn Hall** fire exits are located along the right and left sides, and at the back of the hall. **Eastman Theatre** fire exits are located throughout the Theatre along the right and left sides, and at the back of the orchestra, mezzanine, and balcony levels. In the event of an emergency, you will be notified by the stage manager. If notified, please move in a calm and orderly fashion to the nearest exit.

**Please note:** The use of photographic and recording equipment is not allowed in this building. Patrons may request programs in Braille in advance of a performance by contacting the Concert Office at (585) 274-1110. For information about Eastman concerts, visit our website at [www.esm.rochester.edu](http://www.esm.rochester.edu) or call our MusicLine at (585) 274-1100. We reserve the right to ask anyone disrupting a performance to leave the hall.

A fully accessible restroom is located on the main floor of the Eastman School of Music. Our ushers will be happy to direct you to this facility.

### Supporting the Eastman School of Music:

We at the Eastman School of Music are grateful for the generous contributions made by friends, parents, and alumni, as well as local and national foundations and corporations. Gifts and grants to the School support student scholarships, performance and academic facilities, educational initiatives, and programs open to the greater Rochester community. Every gift, no matter the size, is vital to enhancing Eastman's commitment to excellence. For information on making a gift, please contact the Development Office at (585) 274-1040, or visit the Development website at [www.esm.rochester.edu/giving](http://www.esm.rochester.edu/giving).

Thank you!

# Eastman BroadBand Ensemble

Juan Trigos, music director

Carlos Sanchez-Gutierrez and

Ricardo Zohn-Muldoon, artistic directors

Dieter Hennings, guitar

Makoto Nakura, marimba

Cristina Valdes, piano

and *The Arabesque Winds*

Thursday, September 18, 2008

8:00 p.m.

Kilbourn Hall



**EASTMAN**  
SCHOOL OF MUSIC

UNIVERSITY OF ROCHESTER

PROGRAM

MEET THE ARTISTS

**Eight Etudes and a Fantasy for Wind Quartet**

Maestoso  
Quietly  
Adagio possibile  
Vivace  
Andante  
Allegretto leggero  
Intensely  
Presto  
Fantasy, tempo giusto

Elliott Carter  
(b. 1908)  
17'

*The Arabesque Winds*

**Kammerkonzert**

György Ligeti  
(1923-2006)  
21'

**Ricercare de Cámara VI**  
*for guitar and chamber orchestra*

Dieter Hennings, guitar

Juan Trigos  
(b. 1965)

INTERMISSION

*from Comala Suite No. 2*  
Páramo

Ricardo Zohn-Muldoon  
10'

**Ex Machina**  
*for marimba, piano, and ensemble*

Carlos Sanchez-Gutierrez  
(b. 1964)  
23'

Makoto Nakura, marimba  
Cristina Valdes, piano

Formed at the Eastman School of Music by composers Ricardo Zohn Muldoon and Carlos Sanchez-Gutierrez, the **Eastman BroadBand** is flexible group whose aim is to explore the many facets of contemporary music-making. Its programs draw from the entire Western repertoire, placing a special emphasis on the music of our time. Among the Eastman BroadBand's recent appearances are those alongside composer Helmut Lachenmann at Mexico's *Festival de Música Contemporánea a Morelia*; at the Joyce Theatre with the Garth Fagan Dance Company of the New York premiere of Zohn-Muldoon's *Edge/Joy*, and at the *SpazioMusica* Festival in Cagliari, Italy, under Juan Trigos' direction. The Eastman BroadBand will be Resident Ensemble at the 2008 *Festival Internacional Chihuahua* in Mexico, and will also be featured in the upcoming CD release of Zohn-Muldoon's scenic cantata *Comala*.

PERSONNEL

**FLUTES**  
Deidre Huckabay

**OBOES**  
Elizabeth Spector

**CLARINETS**  
Isabel Kim  
David Warren

**BASSOONS**  
Eryn Bauer

**HORN**  
Sophia Goluses

**TRUMPET**  
Bradley Hogarth

**TROMBONE**  
Peter Fanelli

**PIANO/KEYBOARD**  
Jung Sun Kang  
Bobby Mitchell

**PERCUSSION**  
Matthew Thomas  
Maria Finkelmeier  
Sean Connors

**VIOLIN**  
Hanna Hurwitz  
Vivek Jayaraman

**VIOLA**  
Jason Seah

**CELLO**  
Mariel Roberts

**BASS**  
Scott Worthington

**GUITAR**  
Dieter Hennings

**Program**  
**Honors Chamber Music Recital**  
**Monday, April 28, 2008**  
**9:00 pm**  
**Kilbourn Hall**

**Sechs Bagatellen für Bläserquintett**

**György Ligeti**

- I. Allegro con spirito
- II. Rubato, Lamentoso
- III. Allegro grazioso
- IV. Presto ruvido
- V. Adagio
- VI. Molto vivace, Capriccioso

12'

Deidre Huckabay, flute  
Liz Spector, oboe  
Isabel Kim, clarinet  
Sophia Goluses, horn  
Eryn Bauer, bassoon

**String Quartet No. 2**

**Sergei Prokofiev**

35'

Tatiana Glava, violin  
Olga Turkina, violin  
Alexander Pena, viola  
Alison Rowe, cello

**Back Burner**

**Frank Ticheli**

7'

Doug O'Connor, soprano saxophone  
Brandon Kies, alto saxophone  
Gai Qun, tenor saxophone  
Quinn Lewis, baritone saxophone

**Piano Trio in C minor**

**Johannes Brahms**

- I. Allegro energico
- II. Presto non assai
- III. Andante grazioso
- IV. Allegro molto-meno Allegro

30'

Jenna Anderson, violin  
Rebecca Herman, cello  
Ada Jeon, piano

NEO Chamber Orchestra

April 13, 2008

*Pelleas and Melisande*.....Jean Sibelius

1. At the Castle Gate
2. Melisande at the Spinnig Wheel
3. Interlude
4. Melisande's death

Matilda Hofman, conductor

*Bucolics*.....Witold Lutoslawski

- i. Allegro vivace
- ii. Allegretto sostenuto, poco rubato
- iii. Allegro molto
- iv. Andantino
- v. Allegro marciale

Andrew Barnhart, cello and Molly O'Brien, viola

*Pastorale d'ete*.....Arthur Honegger

Reuben Blundell, conductor

*Sechs Bagatellen (1953)*.....György Ligeti

Allegro con spirito  
Rubato. Lamentoso  
Allegro grazioso  
Presto ruvido  
Adagio (Bela Bartók in memoriam)  
Molto vivace. Capriccioso

Arabesque Winds: Deidre Huckabay, flute; Liz Spector, oboe; Isabel Kim,  
clarinet; Sophie Goluses, horn; Eryn Bauer, bassoon

*Mother Goose Suite*.....Maurice Ravel

1. Pavane of Sleeping Beauty
2. Little Tom Thumb
3. Laideronnette, Little Empress of the Pagodas

Reuben Blundell, conductor

We would like to thank all of our performers who have generously volunteered their time while anticipating their performance exams in one week! They have juggled schedules and practice times to be here and we could not have done it without them. We also extend a big thank you to Deb for all of her help, including the great posters, and to the Downtown Library for including us in the Big Read kick-off schedule of events. We're glad to be here! Lastly, but certainly not least, thank *you* for coming and listening.

~~~~~

#### About the New Eastman Outreach Orchestra:

In its third season, *NEO* continues its dedication to promoting classical symphonic music in the Rochester community and in the spirit of its name derived from the Greek word *neos*, or new. *NEO's* purpose is to help generate a new and revived interest in classical music among all members of the Rochester community by presenting compelling, professional-quality concerts. The musicians strive to reinterpret the traditional concert experience through audience participation, innovative programming, interaction between audience and musicians, and more. *NEO* also gives Eastman students an opportunity to develop the skills they will need to be leaders in the ongoing effort to revitalize classical music. To see board member bios, a list of concerts, or to provide feedback via email, go to [www.NEOorchestra.org](http://www.NEOorchestra.org).

## Upcoming Concerts

Monday, December 10  
Eastman Philharmonia  
Eastman Theatre 8 PM

Tuesday, December 11  
Eastman Collegium Musicum  
Kilbourn Hall 8 PM

Wednesday, December 12  
Eastman Jazz Ensemble  
Kilbourn Hall 8 PM

Thursday, December 13  
Composer's Forum  
Kilbourn Hall 12:30 PM

Thursday, December 13  
Eastman Repertory Singers & Women's Chorus  
Kilbourn Hall 8 PM

Friday, December 14  
Eastman Wind Orchestra  
Kilbourn Hall 8 PM

Kilbourn Hall fire exits are located along the right and left sides, and at the back of the hall. Eastman Theatre fire exits are located throughout the Theatre along the right and left sides, and at the back of the orchestra, mezzanine, and balcony levels. In the event of an emergency, you will be notified by the stage manager. If notified, please move in a calm and orderly fashion to the nearest exit.

**Please note:** The use of photographic and recording equipment is not allowed in this building. Patrons may request programs in Braille in advance of a performance by contacting the Concert Office at (585) 274-1110. For information about Eastman concerts, visit our website at [www.esm.rochester.edu](http://www.esm.rochester.edu) or call our MusicLine at (585) 274-1100. We reserve the right to ask anyone disrupting a performance to leave the hall.

A fully accessible restroom is located on the main floor of the Eastman School of Music. Our ushers will be happy to direct you to this facility.

**Supporting the Eastman School of Music:**  
We at the Eastman School of Music are grateful for the generous contributions made by friends, parents, and alumni, as well as local and national foundations and corporations. Gifts and grants to the School support student scholarships, performance and academic facilities, educational initiatives, and programs open to the greater Rochester community. Every gift, no matter the size, is vital to enhancing Eastman's commitment to excellence. For information on making a gift, please contact the Development Office at (585) 274-1040, or visit the Development website at [www.esm.rochester.edu/giving](http://www.esm.rochester.edu/giving).

Thank you!

## Chamber Music Honors Recital

Sunday, December 9, 2007  
7:00 p.m.  
Kilbourn Hall



**EASTMAN**  
SCHOOL OF MUSIC  
UNIVERSITY OF ROCHESTER

PROGRAM

Suite in G Minor, Op. 71

Maurice Moszkowski  
(1854-1925)

Allegro energico  
Allegro moderato  
Lento assai  
Molto vivace

Ji Eun Park, violin  
Ji Hye Kee, violin  
Jinnee Kim, piano

Quintett für Blasinstrumente

Theodor Blumer  
(1881-1964)

Sehr frisch und feurig  
Romanze  
Leicht fließend  
Finale

Haley Bangs, flute  
Elizabeth Spector, oboe  
Isabel Kim, clarinet  
Eryn Bauer, bassoon  
Sophie Goluses, horn

Piano Trio in B-flat Major, Op. 97

Ludwig van Beethoven  
(1770-1827)

Allegro moderato  
Scherzo  
Andante cantabile  
Allegro moderato

Anat Kardontchik, violin  
Jordan Allen, cello  
Daria Rabotkina, piano

## Upcoming Concerts

Wednesday, November 14  
Composer's Forum  
Kilbourn Hall 7 PM

Wednesday, November 14  
Eastman Wind Ensemble  
Eastman Theatre 8 PM

Thursday, November 15  
Jazz Lab Band  
Kilbourn Hall 8 PM

Friday, November 16  
Eastman Philharmonia  
Eastman Theatre 8 PM

Tuesday, November 20  
Faculty Artist Series:  
John Marcellus, trombone  
Kilbourn Hall 8 PM

Tickets: \$10 (Free to UR/ID holders)

Kilbourn Hall fire exits are located along the right and left sides, and at the back of the hall. Eastman Theatre fire exits are located throughout the Theatre along the right and left sides, and at the back of the orchestra, mezzanine, and balcony levels. In the event of an emergency, you will be notified by the stage manager. If notified, please move in a calm and orderly fashion to the nearest exit.

**Please note:** The use of photographic and recording equipment is not allowed in this building. Patrons may request programs in Braille in advance of a performance by contacting the Concert Office at (585) 274-1110. For information about Eastman concerts, visit our website at [www.esm.rochester.edu](http://www.esm.rochester.edu) or call our MusicLine at (585) 274-1100. We reserve the right to ask anyone disrupting a performance to leave the hall.

A fully accessible restroom is located on the main floor of the Eastman School of Music. Our ushers will be happy to direct you to this facility.

### Supporting the Eastman School of Music:

We at the Eastman School of Music are grateful for the generous contributions made by friends, parents, and alumni, as well as local and national foundations and corporations. Gifts and grants to the School support student scholarships, performance and academic facilities, educational initiatives, and programs open to the greater Rochester community. Every gift, no matter the size, is vital to enhancing Eastman's commitment to excellence. For information on making a gift, please contact the Development Office at (585) 274-1040, or visit the Development website at [www.esm.rochester.edu/giving](http://www.esm.rochester.edu/giving).

Thank you!

## Faculty Artist Series

# Carlos Sanchez-Gutierrez, composer

Tuesday, November 13, 2007  
8:00 p.m.  
Kilbourn Hall

PROGRAM

**Machinery, I-IV (after Arthur Ganson's Machines) (2007)**  
*World Premiere*

*Please Note: These works will be performed throughout the concert – see below.*

Tinguely  
Machine with Chinese Fan  
Machine with Wishbone  
Child Watching Ball  
Dodecapede

Jung San Kang, Hae-Yeun Jeun, pianos

**Machinery**

I. Tinguely

**Cinco, Cinco and Seis, for solo flute (1988)**

Deidre Huckabay, flute

**Machinery**

II. Machine with Chinese Fan

**Duo Canónico II (2000, new version for marimba and guitar, 2007)**

Makoto Nakura, marimba  
Dieter Hennings, guitar

**Machinery**

III. Machine with Wishbone

**Twittering Variations, for woodwind quintet (2007)**  
*U.S. Premiere*

*Arabesque Winds*  
Haley Bangs, flute  
Elizabeth Spector, oboe  
Isabel Kim, clarinet  
Eryn Bauer, bassoon  
Sophia Goluses, horn

**Machinery**

IV. Child Watching Ball

**Winik/Te' (2005)**

Makoto Nakura, marimba

**Machinery**

V. Dodecapede

**“...[and of course Henry the Horse] Dances the...” (2007)**

Genghis??  
Mandala Tequilandala  
Machine with Artichoke Petals?  
Things Keep Going...

Matthew Zerweck, Sara Ballance, violins  
Jason Sah, viola

Mariel Roberts, cello

Daniela Mineva, Pomphan Banterngansa, pianos  
Jacob Thieben, Maria Finkelmeier, percussion  
Reuben Blundell, conductor

## PROGRAM NOTES

### **Machinery, I-IV (after Arthur Ganson's Machines) (2007)**

These pieces, four out of a growing collection of miniatures written for piano duo, are part homage, part commentary on the awesome machines built by the American artist Arthur Ganson – a self-described cross between a mechanical engineer and a choreographer. Ganson's machines are simple and profound, quiet and eloquent, high-tech and low-tech, finite and eternal.

### **Cinco, Cinco and Seis (1988)**

These two short pieces are the only remains of a 1988 stylistic wreckage that destroyed what used to be a series of six studies for solo flute written for my friend Lory McConnell. Lory later changed her name and became a punk-rock star...

### **Duo Canónico II (2000, new version for marimba and guitar, 2007)** *Written for and dedicated to the Katona Twins, and commissioned in part by the Summer Music Society of Dorset, England.*

It is hard to write for the guitar and not think about Flamenco. But trying to quote, emulate, or refer directly to – compete with – the stylistic monument built by the likes of Manitas de Plata, Paco de Lucía, or Tomatito is simply out of the question for me. As I went along composing and trying to think only about notes and rhythms, the extra-musical idea of the two guitars appearing in the piece the way musicians and dancers emerge on a Spanish “tablao” somehow crept in. In Flamenco, so much of the action is delivered in staggered, episodic fashion with only one cathartic burst of unison frenzy reserved for the end, when the “duende” finally appears, completely overwhelming both performers and audience. The sound of hocketing rhythms, the staggered entrances, the constant cat-and-mouse interplay of the two guitars, and – hopefully – the arrival of that elusive “duende” at the end, will surely demonstrate that no matter how hard one can try, the Flamenco spirit is simply too strong to be subdued. This version for marimba and (amplified) guitar has been written upon Dieter Hennings' kind request.

### **Twittering Variations, for woodwind quintet (2007)** *Commissioned by Mexico's Fondo Nacional para la Cultura y las Artes.*

The ideas the Swiss artist Paul Klee expressed concerning the structure of art have fascinated me for a long time. Klee, himself a part-time musician, compiled many of the technical features of his work in a number of volumes of inspiring pedagogic value. Like several other composers, I have always felt attracted to what Klee could have called “Twittering Machines”: the unpredictable devices whose systematic – yet imperfect – behavior is not unlike the “processes” we often find in musical structures. I love to observe clockworks with missing or erratic parts; or a spider who laboriously tries to climb a wall, or one of those precarious robots built by Rodney Brooks, whose “function” is not to fulfill a task but, simply, to “exist.” They are all twittering machines whose image never fails to ignite my imagination. My musica “twittering machines,” an uninterrupted chain of twenty short variations (or, more precisely, “perspectives”), try to be tangible, yet always imperfect, musical “mechanisms.”

### **Winik/Te' (2005)**

According to the Mayan sacred book, the Popol Vuh, the gods Hurrican and Heart-of-Sky used mud to make the first human being. This man had no soul and his body crumbled, cracked and, ultimately, melted with the arrival of the first rain. It was unable to do anything well and was discarded. Then, the gods carved new men out of wood. Hopefully their new creation would “speak [the gods'] name, walk about, multiply and live a purposeful life.” But the wood/men (Winik/Te' in Quiché, the Mayan language), though better than the previous version, still “...had no blood, no sweat, nothing in their minds, and showed no respect for Heart-of-Sky.” They maltreated the other animals and misused the land. These imperfect men, with their human-like wooden faces, were banished to the forests by Hurricane and Heart-of-Sky. The monkey that now lives in the jungles are the descendants of the Winik/Te'. When I look at mankind, I often wonder if the mindless, soulless Winik/Te' were truly sent by the Mayan gods to inhabit the forests. To me, these monkey-people seem to be everywhere I go, and when I look at the world I see their imperfect minds, bodies and souls abusing a land that

cogwheel-like shadows are projected onto the walls, creating a perpetual counterpoint of light, sound and movement. "Machine with Artichoke Petals?" takes its title from one of the machines built by Arthur Granson. "Things Keep Going..." dreams about the world of Swiss artists Peter Fischli and David Weiss, specifically their masterful film "The Way Things Go": a sort of perpetual cycle where fire, air, gravity and corrosive liquids make it possible for mops, buckets, wood planks and old bottles to stage a carefully choreographed dance that is part chain-reaction, part circus-act-Being for the Benefit of Mr. Kite!

#### MEET THE ARTISTS

Composer **Carlos Sanchez-Gutierrez** was born in Mexico City in 1964 and now lives in the New York Tundra, where he teaches composition at the Eastman School of Music. He studied with Jacob Druckman, Martin Bresnick, Steven Mackey, and Henri Dutilleux at Yale, Princeton and Tanglewood, respectively. He has received many of the standard awards in the field (e.g. Barlow, Guggenheim, Fulbright, Koussevitsky, Fromm, American Academy of Arts and Letters). He likes machines with hiccups and spiders with missing legs, looks at Paul Klee's Notebooks everyday, hasn't grown much since he reached adulthood at age 14, and tries to use the same set of ears to listen to Bach, Radiohead, Ligeti, or Deep Purple.

Marimbist **Makoto Nakura** creates innovative programs of new music as well as traditional classical repertoire, revealing the versatility and expressive range of the marimba while enlightening and entertaining the listener. In 1994, Makoto Nakura came from his native Japan to become the first marimbist to win First Prize in the prestigious Young Concert Artists International Auditions. He has performed for audiences in 40 of the 50 states with orchestras such as the New York Chamber Symphony, the Chicago Sinfonietta and the California Symphony. As a recital soloist, his long list of appearances includes Carnegie's Weill Recital Hall, New York's 92nd Street Y, Washington's Kennedy Center, Seoul's Hoam Art Hall and Tokyo's Suntory Hall. He has performed numerous times with the American Ballet Theater in New York City, including appearances at the Metropolitan Opera House, the Kaye Playhouse, and

most recently, at City Center, where he was soloist in the dance company's new production of "Marimba." He has also appeared as a guest artist with The Chamber Music Society of Lincoln Center, and at the Spoleto USA Festival, the Bridgehampton Chamber Music Festival, and Music from Angel Fire. Mr. Nakura has established himself as a dedicated champion of the music of our time. Many leading young composers such as Kevin Puts, Kenji Bunch, Carlos Sanchez-Gutierrez, Pierre Jalbert, David Schober and Jason Eckardt have written pieces for him. Born in Kobe, Japan, Mr. Nakura earned Bachelor's and Master's degrees from Musashino College in Tokyo, where he wrote his graduate thesis on the marimba as a solo instrument. He continued his studies at the Royal Academy of Music in London. His recent honors include a National Arts Festival New Artist Award from the Japanese Agency of Cultural Affairs and the BMI/Carlos Surinach Fund Marimba Commission. He was named an Associate of the Royal Academy of Music in London. His first CD from Kleos Classics, "Ritual Protocol" and his second CD, "Tsuneya Tanabe Works for Marimba" on Japan's ALM Records, are devoted to works written especially for him. His latest CD from Kleos, "Triple Jump: Six Original Pieces for Marimba" was released in November 2004. A television portrait of Mr. Nakura was shown nationally on CBS Sunday Morning. His recitals have been widely televised by KBS(Korea) and NHK(Japan) and played on many radio stations.

The **Arabesque Winds** formed at the Eastman School of Music in the fall of 2005. In 2007, the quintet was a finalist ensemble in the Coleman Chamber Music Competition. Also in 2007, the Arabesque Winds were semi-finalists in the Plowman Chamber Music Competition and Fischhoff National Chamber Music Competition. While at Eastman, the quintet was featured on the Honors Chamber Music Recitals during the fall of 2006 and the spring of 2007. The Arabesque Winds have performed in the Rochester City Schools, the Harley School, local churches, and libraries through the Eastman School of Music's Music for All program. In 2007, the group performed *Bebop to Bach* children's presentation at the Harley School with Terry Smith. The Arabesque Winds have also been recipients of a professional development grant from the Eastman School of Music.

## Upcoming Concerts

Monday, December 4  
Eastman Women's Chorus  
Kilbourn Hall 8 PM

Tuesday, December 5  
Faculty Artist Series:  
Steven Doane, cello  
Kilbourn Hall 8 PM

Tickets \$10 available at the door only (free to UR ID holders)

Wednesday, December 6  
Eastman New Jazz Ensemble  
Kilbourn Hall 8 PM

Thursday, December 7  
Eastman Marimba Ensemble  
Kilbourn Hall 8 PM

Friday, December 8  
Chamber Music Honors Concert  
Kilbourn Hall 7 PM

Kilbourn Hall fire exits are located along the right and left sides, and at the back of the hall. Eastman Theatre fire exits are located throughout the Theatre along the right and left sides, and at the back of the orchestra, mezzanine, and balcony levels. In the event of an emergency, you will be notified by the stage manager. If notified, please move in a calm and orderly fashion to the nearest exit.

**Access note:** The use of photographic and recording equipment is not allowed in this building. Patrons may request programs in Braille in advance of a performance by contacting the Concert Office at (585) 274-1110. For information about Eastman concerts, including an online copy of In-House, Eastman's weekly event calendar, visit our website at [www.esm.rochester.edu](http://www.esm.rochester.edu) or call our MusicLine at (585) 274-1100. We reserve the right to ask anyone disrupting a performance to leave the hall.

A fully accessible restroom is located on the main floor of the Eastman School of Music. Our ushers will be happy to direct you to this facility.

**Supporting the Eastman School of Music:**  
We at the Eastman School of Music are grateful for the generous contributions made by friends, parents, and alumni, as well as local and national foundations and corporations. Gifts and grants to the School support student scholarships, performance and academic facilities, educational initiatives, and programs open to the greater Rochester community. Every gift, no matter the size, is vital to enhancing Eastman's commitment to excellence. For information on making a gift, please contact the Development Office at (585) 274-1040, or visit the Development website at [www.esm.rochester.edu/giving](http://www.esm.rochester.edu/giving).

Thank you!



## Chamber Music Honors Recital

Sunday, December 3, 2006  
9:00 p.m.  
Kilbourn Hall

### PROGRAM

Trio for Flute, Oboe and Piano  
Allegro con brio

Madeleine Dring  
(1923-1977)

Andante semplice  
Allegro giocoso

Judy White, flute  
Anna Peterson, oboe  
Cara Johnson, piano

Shane Helfner, oboe  
Oliver Hagen, clarinet  
Dan Nebel, horn  
Po Yao Richard Chen, bassoon

**Kleine Kammermusik für fünf Bläser**

Lustig  
Walzer  
Ruhig und einfach  
Schnelle Viertel  
Sehr lebhaft

Paul Hindemith  
(1895-1963)

**Sextuor**  
Allegro vivace  
Divertissement  
Finale

Francis Poulenc  
(1899-1963)

Gina Leija, flute  
Elizabeth Spector, oboe  
Isabel Kim, clarinet  
Sophie Goluses, horn  
Eryn Bauer, bassoon

Heather Zinninger, flute  
Erin Tsai, oboe  
Jeremy Klenke, clarinet  
Scott Switzer, bassoon  
J. Gregory Miller, horn  
Owen Zhou, piano

**Suite from the Monteregian Hills**

La Marche  
Chanson Melancolique  
Valse Ridicule  
Danse Villageoise

Morley Calvert  
(1928-1991)

Brad Hogarth, trumpet  
Matt Osika, trumpet  
Sheryl Hadeka, horn  
Timothy Solinger, trombone  
Alex Reeder, tuba

**INTERMISSION**

**Woodwind Quintet (1948)**

Helen Kong, flute

Elliot Carter  
(b. 1908)